

[View PDF Print Email](#)



## Port & Company® Long Sleeve Performance Tee. PC380LS



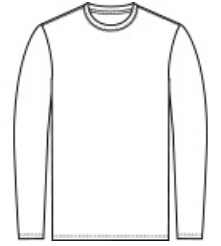
Our value-priced polyester tee performs with Dry Zone® moisture-wicking technology to keep you cool, dry and comfortable.

- 3.8-ounce, 100% polyester
- Tag-free label
- Hemmed cuffs
- 

*Due to the nature of 100% polyester performance fabrics, special care must be taken throughout the printing process.*

### CARE INSTRUCTIONS

Machine wash cold, inside out with like colors. Only non-chlorine bleach when needed. Tumble dry low. Do not iron. Do not use fabric softener.

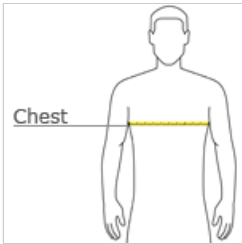


front



back

### HOW TO MEASURE



#### CHEST WIDTH

Measure under the arm and around the fullest part of the chest with arms down, keeping tape horizontal.

### SIZE CHART

	S	M	L	XL	2XL	3XL	4XL
Chest	35-37	38-40	41-43	44-46	47-49	50-53	54-57

### COLOR INFORMATION

